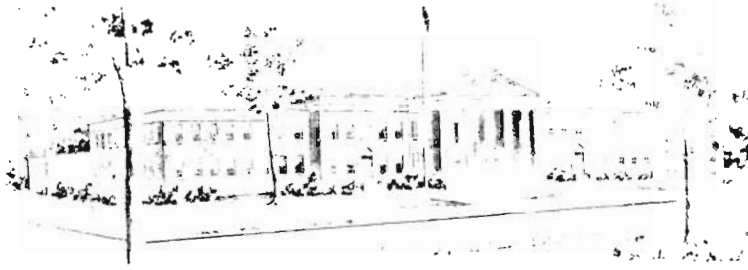


OCEAN COUNTY
OFFICIAL BOARD OF
CANVASSER REPORT
PRIMARY ELECTION
06/02/87

M. DEAN HAINES
COUNTY CLERK
DEPUTY CLERK SUPERIOR COURT
OF NEW JERSEY

DANIEL J. HENNESSY
DEPUTY COUNTY CLERK



COURT HOUSE
C.N. 2191
Toms River, N.J. 08754
201-929-2018

COUNTY OF OCEAN
OFFICE OF THE COUNTY CLERK

CANVASSERS REPORT
1987 PRIMARY ELECTION

COUNTY OF OCEAN

Enclosed is your copy of the 1987 Primary Election Results concerning an election held in the County of Ocean on June 2, 1987. This report is presented in a format that will make it more convenient for easy reference and filing.

Sincerely,

M. Dean Haines
County Clerk

OCEAN COUNTY
OFFICIAL BOARD OF CANVASSER REPORT
PRIMARY ELECTION 06/02/87

STATE SENATOR - 9TH DIST

OFFICE	CANDIDATE	(R) CONNORS, JR.	(D) TREDY	NUMBER OF REGISTERED	NUMBER OF BALLOTS CAST	REP BALLOT CAST	DEM BALLOT CAST
BARNEGAT TOWNSHIP	DISTRICT 01	198	34	883	303	263	40
	DISTRICT 02	141	29	708	258	227	31
	DISTRICT 03	91	14	687	165	147	18
	DISTRICT 04	63	25	552	108	82	26
	DISTRICT 05	128	43	634	189	143	46
	DISTRICT 06	79	17	578	128	109	19
MUNICIPAL TOTALS	MILITARY	0	0	0	0	0	0
	CIVILIAN	35	3	4042	1195	1012	183
BARNEGAT LIGHT BOROUGH	DISTRICT 01	244	16	568	355	325	30
	MILITARY	0	0	0	0	0	0
	CIVILIAN	31	2	568	405	47	3
MUNICIPAL TOTALS	MILITARY	275	18	568	405	372	33
	CIVILIAN	144	16	1072	168	149	19
BEACH HAVEN BOROUGH	DISTRICT 01	144	16	1072	168	149	19
	MILITARY	0	0	0	0	0	0
MUNICIPAL TOTALS	CIVILIAN	1	0	0	1	1	0
	CIVILIAN	145	16	1072	169	150	19
BEACHWOOD BOROUGH	DISTRICT 01	62	15	664	80	64	16
	DISTRICT 02	35	14	815	50	35	15
	DISTRICT 03	20	22	674	46	22	24
	DISTRICT 04	37	27	1091	65	37	28
	DISTRICT 05	25	19	695	47	25	22
	MILITARY	0	0	0	0	0	0
MUNICIPAL TOTALS	CIVILIAN	3	4	3939	7	3	4
	CIVILIAN	182	101	3939	295	186	109
BERKELEY TOWNSHIP	DISTRICT 01	33	28	172	68	37	29
	DISTRICT 02	27	16	888	45	28	17
	DISTRICT 03	7	7	397	17	7	10
	DISTRICT 04	25	19	953	45	25	20
	DISTRICT 05	10	20	669	31	11	20
	DISTRICT 06	28	4	967	32	28	4
	DISTRICT 07	26	21	992	48	26	22
	DISTRICT 08	80	33	754	118	82	36
	DISTRICT 09	45	40	812	87	45	42
	DISTRICT 10	18	27	808	49	21	28
	DISTRICT 11	12	18	561	30	12	18
	DISTRICT 12	31	35	748	70	32	38
	DISTRICT 13	67	22	803	90	65	25
	DISTRICT 14	16	30	672	48	16	32
	DISTRICT 15	22	20	585	43	22	21

OC. COUNTY
OFFICIAL BOARD OF CANVASSER REPORT
PRIMARY ELECTION 06/02/87

STATE SENATOR - 9TH DIST

OFFICE

CANDIDATE (R) CONNORS, JR. (D) TREDY

CANDIDATE	(R)	(D)	NUMBER OF REGISTERED	NUMBER OF BALLOTS CAST	REP BALLOT CAST	DEM BALLOT CAST
DISTRICT 16	15	9	532	25	16	9
DISTRICT 17	17	35	741	56	17	39
DISTRICT 18	37	28	789	83	41	42
DISTRICT 19	56	6	700	88	57	31
DISTRICT 20	8	34	365	14	8	6
DISTRICT 21	19	27	548	351	99	252
DISTRICT 22	35	21	983	66	35	31
DISTRICT 23	12	55	637	34	12	22
DISTRICT 24	35	57	914	92	36	56
DISTRICT 25	47	36	1032	108	48	60
DISTRICT 26	62	68	1053	58	35	23
DISTRICT 27	62	21	863	136	64	72
DISTRICT 28	37	35	656	62	40	22
DISTRICT 29	40	6	647	79	41	38
DISTRICT 30	6	0	122	12	6	6
MILITARY	0	0	0	0	0	0
CIVILIAN	29	22	0	52	29	23
MUNICIPAL TOTALS	964	836	21063	2135	1041	1094
EAGLESWOOD TOWNSHIP						
DISTRICT 01	103	20	657	132	109	23
MILITARY	0	0	0	0	0	0
CIVILIAN	0	0	0	0	0	0
MUNICIPAL TOTALS	103	20	657	132	109	23
HARVEY CEDARS						
DISTRICT 01	41	7	344	50	43	7
MILITARY	0	0	0	0	0	0
CIVILIAN	2	0	0	2	2	0
MUNICIPAL TOTALS	43	7	344	52	45	7
ISLAND HEIGHTS BOROUGH						
DISTRICT 01	54	20	970	79	54	25
MILITARY	0	0	0	0	0	0
CIVILIAN	2	3	0	6	2	4
MUNICIPAL TOTALS	56	23	970	85	56	29
JACKSON TOWNSHIP						
DISTRICT 01	25	14	598	40	26	14
DISTRICT 02	24	23	1170	48	25	23
DISTRICT 03	29	11	834	42	31	11
DISTRICT 04	31	8	672	41	33	8
DISTRICT 05	12	13	932	27	12	15
DISTRICT 06	9	12	680	22	9	13
DISTRICT 07	11	14	793	28	11	17
DISTRICT 08	12	18	715	27	12	15
DISTRICT 09	15	18	1383	36	15	21
DISTRICT 10	18	6	611	24	18	6
DISTRICT 11	25	44	443	72	26	46

**OCEAN COUNTY
OFFICIAL BOARD OF CANVASSER REPORT
PRIMARY ELECTION 06/02/87**

M. Dean Haines
Office of the County Clerk

OFFICE	STATE SENATOR - 9TH DIST	NUMBER OF REGISTERED	NUMBER OF BALLOTS CAST	REP BALLOT CAST	DEM BALLOT CAST
CANDIDATE	(R) CONNORS, JR.	(D) TREDY			
DISTRICT 12	12	5	17	12	5
DISTRICT 13	24	37	74	36	38
DISTRICT 14	11	13	26	10	16
DISTRICT 15	10	13	23	10	13
MILITARY	0	0	0	0	0
CIVILIAN	9	11	20	9	11
MUNICIPAL TOTALS	277	256	567	295	272
LACEY TOWNSHIP					
DISTRICT 01	27	22	49	27	22
DISTRICT 02	28	26	56	29	27
DISTRICT 03	22	16	41	23	18
DISTRICT 04	29	25	57	30	27
DISTRICT 05	31	28	431	242	189
DISTRICT 06	41	20	61	41	20
DISTRICT 07	28	12	42	30	12
DISTRICT 08	21	21	45	22	23
DISTRICT 09	12	10	26	13	13
DISTRICT 10	19	18	43	24	19
DISTRICT 11	113	61	177	115	62
DISTRICT 12	13	8	21	13	8
MILITARY	0	0	0	0	0
CIVILIAN	14	11	27	15	12
MUNICIPAL TOTALS	398	278	1076	624	452
LAKEHURST BOROUGH					
DISTRICT 01	59	20	84	61	23
MILITARY	0	0	0	0	0
CIVILIAN	4	2	7	5	2
MUNICIPAL TOTALS	63	22	91	66	25
LITTLE EGG HARBOR TWP.					
DISTRICT 01	58	4	73	68	5
DISTRICT 02	55	21	89	52	27
DISTRICT 03	53	40	117	64	53
DISTRICT 04	46	30	93	56	37
DISTRICT 05	62	21	89	67	22
DISTRICT 06	49	38	108	63	45
DISTRICT 07	52	30	96	62	34
MILITARY	0	0	0	0	0
CIVILIAN	8	4	13	8	5
MUNICIPAL TOTALS	383	188	678	450	228
LONG BEACH TOWNSHIP					
DISTRICT 01	80	10	96	85	11
DISTRICT 02	90	12	105	90	15
DISTRICT 03	41	9	53	44	9
MILITARY	2	0	2	2	0
CIVILIAN	1	2	3	1	2

OCLE COUNTY
OFFICIAL BOARD OF CANVASSER REPORT
PRIMARY ELECTION 06/02/87

OFFICE STATE SENATOR - 9TH DIST

CANDIDATE	(R) CONNORS, JR.	(D) TREDY	NUMBER OF REGISTERED	NUMBER OF BALLOTS CAST	REP BALLOT CAST	DEM BALLOT CAST
MUNICIPAL TOTALS	214	33	2551	259	222	37
MANCHESTER TOWNSHIP						
DISTRICT 01	31	9	730	43	34	9
DISTRICT 02	29	12	946	43	29	14
DISTRICT 03	34	12	856	51	38	13
DISTRICT 04	70	30	584	104	73	31
DISTRICT 05	84	16	452	104	88	16
DISTRICT 06	124	34	619	163	125	38
DISTRICT 07	50	7	410	57	50	7
DISTRICT 08	52	19	490	72	55	17
DISTRICT 09	128	28	682	161	132	29
DISTRICT 10	72	17	447	91	73	18
DISTRICT 11	95	23	696	119	96	23
DISTRICT 12	122	22	647	150	125	25
DISTRICT 13	120	27	869	154	125	29
DISTRICT 14	145	37	1065	184	146	38
DISTRICT 15	60	9	872	69	60	9
DISTRICT 16	120	37	1243	164	126	38
DISTRICT 17	107	32	722	142	107	35
DISTRICT 18	107	19	690	134	113	21
DISTRICT 19	89	21	994	112	90	22
DISTRICT 20	127	55	1433	184	128	56
DISTRICT 21	166	88	1283	262	170	92
DISTRICT 22	137	26	716	167	140	27
DISTRICT 23	115	40	737	161	118	43
DISTRICT 24	31	11	1128	43	32	11
DISTRICT 25	107	33	717	146	112	34
DISTRICT 26	115	42	772	159	116	43
DISTRICT 27	49	18	794	68	49	19
MILITARY	0	0	0	0	0	0
CIVILIAN	60	23	0	84	61	23
MUNICIPAL TOTALS	2546	747	21594	3391	2611	780
OCEAN TOWNSHIP						
DISTRICT 01	86	18	868	103	86	17
DISTRICT 02	74	16	773	98	81	17
DISTRICT 03	40	28	791	72	41	31
MILITARY	0	0	0	0	0	0
CIVILIAN	3	3	0	6	3	3
MUNICIPAL TOTALS	203	65	2432	279	211	68
OCEAN GATE BOROUGH						
DISTRICT 01	154	18	848	190	170	20
MILITARY	0	0	0	0	0	0
CIVILIAN	1	0	0	1	1	0
MUNICIPAL TOTALS	155	18	848	191	171	20
PLUMSTED TOWNSHIP						
DISTRICT 01	43	20	1123	67	46	21

**OCEAN COUNTY
OFFICIAL BOARD OF CANVASSER REPORT
PRIMARY ELECTION 06/02/87**

M. Dean Haines
Office of the County Clerk

OFFICE STATE SENATOR - 9TH DIST

CANDIDATE	(R)	(D)	NUMBER OF REGISTERED	NUMBER OF BALLOTS CAST	REP BALLOT CAST	DEM BALLOT CAST
DISTRICT 02	25	6	575	34	27	7
MILITARY	0	0	0	0		
CIVILIAN	2	1	1698	3	2	1
MUNICIPAL TOTALS	70	27		104	75	29
SHIP BOTTOM BOROUGH						
DISTRICT 01	133	25	946	170	144	26
MILITARY	0	0	0	0		
CIVILIAN	3	0	946	5	4	1
MUNICIPAL TOTALS	136	25		175	148	27
SOUTH TOMS RIVER BOROUGH						
DISTRICT 01	10	15	401	32	10	22
DISTRICT 02	17	30	798	52	17	35
DISTRICT 03	15	13	465	33	15	18
MILITARY	0	0	0	0		
CIVILIAN	3	2	0	7	3	4
MUNICIPAL TOTALS	45	60	1664	124	45	79
STAFFORD TOWNSHIP						
DISTRICT 01	35	15	820	51	35	16
DISTRICT 02	22	10	770	35	23	12
DISTRICT 03	32	20	1151	53	31	22
DISTRICT 04	38	29	931	72	38	34
DISTRICT 05	67	34	783	104	68	36
DISTRICT 06	37	23	1096	62	38	24
DISTRICT 07	20	4	676	25	21	4
MILITARY	0	0	0	0		
CIVILIAN	7	7	0	15	8	7
MUNICIPAL TOTALS	258	142	6227	417	262	155
SURF CITY BOROUGH						
DISTRICT 01	136	12	974	157	144	13
MILITARY	0	0	0	0		
CIVILIAN	3	0	0	4	4	
MUNICIPAL TOTALS	139	12	974	161	148	13
TUCKERTON BOROUGH						
DISTRICT 01	82	26	918	112	86	26
DISTRICT 02	44	7	486	56	48	8
MILITARY	0	0	0	0		
CIVILIAN	1	2	0	3	1	2
MUNICIPAL TOTALS	127	35	1404	171	135	36
TOTAL COUNTY VOTE	7517	3094	100546	12152	8434	3718
TOTAL COUNTY VOTE INCLUDES MILITARY AND CIVILIAN ABSENTEE BALLOTS.						
TOTAL CIVILIAN ABSENTEE	222	102	0	360	250	110
TOTAL MILITARY ABSENTEE	2	0	0	2	2	

OC, 1 COUNTY
 OFFICIAL BOARD OF CANVASSER REPORT
 PRIMARY ELECTION 06/02/87

M. Dean Haines
 Office of the County Clerk

STATE SENATOR - 10TH DIST

OFFICE

(R) BLOMQUIST
 (D) RUSSO

CANDIDATE
 BAY HEAD BOROUGH

DISTRICT 01
 MILITARY
 CIVILIAN

MUNICIPAL TOTALS
 BRICK TOWNSHIP

DISTRICT 01
 DISTRICT 02
 DISTRICT 03
 DISTRICT 04
 DISTRICT 05
 DISTRICT 06
 DISTRICT 07
 DISTRICT 08
 DISTRICT 09
 DISTRICT 10
 DISTRICT 11
 DISTRICT 12
 DISTRICT 13
 DISTRICT 14
 DISTRICT 15
 DISTRICT 16
 DISTRICT 17
 DISTRICT 18
 DISTRICT 19
 DISTRICT 20
 DISTRICT 21
 DISTRICT 22
 DISTRICT 23
 DISTRICT 24
 DISTRICT 25
 DISTRICT 26
 DISTRICT 27
 DISTRICT 28
 DISTRICT 29
 DISTRICT 30
 DISTRICT 31
 DISTRICT 32
 DISTRICT 33
 DISTRICT 34
 MILITARY
 CIVILIAN

MUNICIPAL TOTALS
 DOVER TOWNSHIP

DISTRICT 01

DISTRICT 01

DISTRICT 01

DISTRICT 01

DISTRICT 01

DISTRICT 01

NUMBER OF REGISTERED

796
 0
 0
 796

1121
 918
 1037
 839
 824
 701
 658
 1257

479
 859
 577
 1104
 890
 1364
 709
 692
 1218
 652
 1073
 1199
 1086
 938
 740
 758
 1278
 589
 948
 868
 935

820
 709
 611
 1194
 618
 0
 0
 30263

538

86
 0
 4
 90

74
 28
 54
 34
 43
 28
 36
 58

31
 64
 23
 60
 27
 40
 31
 15
 35
 19
 59
 109
 40
 21
 6
 132
 60
 65
 54
 19
 165
 21

119
 104
 37
 76
 30
 0
 46
 1857

64

72
 26
 11
 28
 20
 34
 16
 19

25
 9
 32
 8
 17
 8
 5
 12
 12
 20
 20
 19
 6
 63
 26
 31
 37
 9
 66
 14

41
 49
 9
 47
 12
 27
 803

35

14
 17
 28
 14
 9
 20
 39
 21
 15
 23
 7
 39
 89
 21
 15
 69
 34
 34
 17
 10
 99
 7

48
 17
 28
 14
 9
 18
 20
 39
 14
 28
 19
 23
 8
 23
 10
 23
 7
 39
 89
 21
 15
 69
 34
 34
 17
 10
 99
 7

19
 1054

29

OFFICE	STATE SENATOR - 10TH DIST		NUMBER OF REGISTERED	NUMBER OF BALLOTS CAST	REP BALLOT CAST	DEM BALLOT CAST
CANDIDATE	(R)	(D)				
DISTRICT 02	BLOMQUIST 20	RUSSO 13	567	36	22	14
DISTRICT 03	10	4	580	19	14	5
DISTRICT 04	31	8	926	43	35	8
DISTRICT 05	22	25	867	51	24	27
DISTRICT 06	50	22	1033	74	52	22
DISTRICT 07	23	27	737	56	28	28
DISTRICT 08	38	35	1222	78	41	37
DISTRICT 09	43	15	1011	64	48	16
DISTRICT 10	7	10	477	19	9	10
DISTRICT 11	12	22	698	35	12	23
DISTRICT 12	38	26	1172	69	43	26
DISTRICT 13	18	6	658	26	20	6
DISTRICT 14	17	12	1096	32	20	12
DISTRICT 15	58	50	785	117	64	53
DISTRICT 16	13	13	702	29	15	14
DISTRICT 17	6	15	708	22	7	15
DISTRICT 18	18	4	609	29	24	5
DISTRICT 19	29	22	1108	53	31	22
DISTRICT 20	43	30	1302	74	44	30
DISTRICT 21	22	13	915	43	27	16
DISTRICT 22	80	88	1051	175	87	88
DISTRICT 23	18	14	1171	34	19	15
DISTRICT 24	13	10	868	28	17	11
DISTRICT 25	47	45	721	96	51	45
DISTRICT 26	13	64	773	86	18	68
DISTRICT 27	15	14	921	30	16	14
DISTRICT 28	17	11	750	30	19	11
DISTRICT 29	31	22	985	55	33	22
DISTRICT 30	12	32	588	48	16	32
DISTRICT 31	7	16	496	29	11	18
DISTRICT 32	31	16	713	52	37	15
DISTRICT 33	14	18	814	35	16	19
DISTRICT 34	33	21	649	56	36	20
DISTRICT 35	12	19	699	34	14	20
DISTRICT 36	22	23	854	46	23	23
DISTRICT 37	12	19	522	35	16	19
DISTRICT 38	10	16	654	34	18	16
DISTRICT 39	9	12	771	22	10	12
DISTRICT 40	31	18	602	50	32	18
DISTRICT 41	15	23	651	44	21	23
DISTRICT 42	11	13	684	28	15	13
MILITARY	2	0	0	2	2	
CIVILIAN	25	30	0	61	29	32
MUNICIPAL TOTALS	1029	945	33649	2143	1171	972
LAKWOOD TOWNSHIP						
DISTRICT 01	3	16	561	20	4	16

OC... COUNTY
OFFICIAL BOARD OF CANVASSER REPORT
PRIMARY ELECTION 06/02/87

M. Dean Haines
Office of the County Clerk

STATE SENATOR - 10TH DIST

OFFICE

CANDIDATE (R) (D)

BLOMQUIST RUSSO

NUMBER OF REGISTERED

NUMBER OF BALLOTS CAST

REP BALLOT CAST

DEM BALLOT CAST

CANDIDATE	(R)	(D)	NUMBER OF REGISTERED	NUMBER OF BALLOTS CAST	REP BALLOT CAST	DEM BALLOT CAST
DISTRICT 02	6	15	475	24	9	15
DISTRICT 03	136	78	835	223	144	79
DISTRICT 04	9	53	625	67	13	54
DISTRICT 05	19	19	682	39	19	20
DISTRICT 06	23	23	952	49	26	23
DISTRICT 07	5	16	946	22	5	17
DISTRICT 08	16	21	443	39	18	21
DISTRICT 09	18	11	616	30	18	12
DISTRICT 10	11	4	471	19	15	4
DISTRICT 11	8	9	597	19	10	9
DISTRICT 12	32	56	912	92	34	58
DISTRICT 13	4	16	890	20	4	16
DISTRICT 14	22	28	401	52	24	28
DISTRICT 15	23	25	939	49	24	25
DISTRICT 16	22	15	1156	42	27	15
DISTRICT 17	15	23	663	40	17	23
DISTRICT 18	44	38	512	82	44	38
DISTRICT 19	60	34	566	96	62	34
DISTRICT 20	56	20	481	82	62	20
DISTRICT 21	18	52	431	72	20	52
DISTRICT 22	64	27	586	101	74	27
DISTRICT 23	79	38	586	122	84	38
DISTRICT 24	106	101	851	219	117	102
DISTRICT 25	17	25	718	43	18	25
DISTRICT 26	17	12	716	29	17	12
DISTRICT 27	1	3	995	4	1	3
MILITARY	0	0	0	0	0	0
CIVILIAN	75	39	0	115	75	40
MUNICIPAL TOTALS	909	817	18606	1811	985	826
LAVALLETTA BOROUGH						
DISTRICT 01	200	84	1840	409	331	78
MILITARY	0	0	0	0	0	0
CIVILIAN	11	3	0	16	13	3
MUNICIPAL TOTALS	211	87	1840	425	344	81
MANTOLOKING BOROUGH						
DISTRICT 01	81	2	351	94	92	2
MILITARY	0	0	0	0	0	0
CIVILIAN	3	0	0	3	3	0
MUNICIPAL TOTALS	84	2	351	97	95	2
PINE BEACH BOROUGH						
DISTRICT 01	150	77	1190	261	178	83
MILITARY	0	0	0	0	0	0
CIVILIAN	0	0	0	0	0	0
MUNICIPAL TOTALS	150	77	1190	261	178	83
POINT PLEASANT BOROUGH						
DISTRICT 01	5	10	572	16	5	11

OCEAN COUNTY
 OFFICIAL BOARD OF CANVASSER REPORT
 PRIMARY ELECTION 06/02/87

M. Dean Haines
 Office of the County Clerk

OFFICE	STATE SENATOR - 10TH DIST	NUMBER OF REGISTERED	NUMBER OF BALLOTS CAST	REP BALLOT CAST	DEM BALLOT CAST
CANDIDATE	(R) BLOMQUIST	(D) RUSSO			
DISTRICT 02	18	8	26	18	8
DISTRICT 03	17	11	30	18	12
DISTRICT 04	19	15	37	22	15
DISTRICT 05	27	16	45	29	16
DISTRICT 06	17	3	22	19	3
DISTRICT 07	17	13	30	17	13
DISTRICT 08	24	10	34	24	10
DISTRICT 09	34	11	45	34	11
DISTRICT 10	17	20	39	18	21
DISTRICT 11	23	19	42	23	19
DISTRICT 12	28	19	52	33	19
DISTRICT 13	11	12	23	11	12
DISTRICT 14	8	9	17	8	9
DISTRICT 15	22	11	33	22	11
MILITARY	1	0	1	1	0
CIVILIAN	10	5	16	11	5
MUNICIPAL TOTALS	298	192	508	313	195
POINT PLEASANT BEACH BORO					
DISTRICT 01	16	9	29	20	9
DISTRICT 02	23	8	34	25	9
DISTRICT 03	42	13	462	395	67
DISTRICT 04	39	19	70	50	20
MILITARY	0	0	0	0	0
CIVILIAN	4	3	7	4	3
MUNICIPAL TOTALS	124	52	602	494	108
SEASIDE HEIGHTS BOROUGH					
DISTRICT 01	137	19	188	167	21
MILITARY	0	0	0	0	0
CIVILIAN	3	1	4	3	1
MUNICIPAL TOTALS	140	20	192	170	22
SEASIDE PARK BOROUGH					
DISTRICT 01	58	11	378	288	90
DISTRICT 02	81	24	120	96	24
MILITARY	0	0	0	0	0
CIVILIAN	10	1	11	10	1
MUNICIPAL TOTALS	149	36	509	394	115
TOTAL COUNTY VOTE	3926	3264	8495	5022	3473
TOTAL COUNTY VOTE INCLUDES MILITARY AND CIVILIAN ABSENTEE BALLOTS.					
TOTAL CIVILIAN ABSENTEE	168	101	283	178	105
TOTAL MILITARY ABSENTEE	3	0	3	3	0

OC. COUNTY
OFFICIAL BOARD OF CANVASSER REPORT
PRIMARY ELECTION 06/02/87

GENERAL ASSEMBLY - 9TH DIST

OFFICE	CANDIDATE	(R)	(D)	(R)	(D)	(R)	(D)	NUMBER OF REGISTERED	NUMBER OF BALLOTS CAST	REP BALLOT CAST	DEM BALLOT CAST
BARNEGAT TOWNSHIP	DISTRICT 01	192	34	192	35	303	263	883	303	263	40
	DISTRICT 02	138	25	131	25	227	227	708	258	227	31
	DISTRICT 03	89	12	86	14	147	147	687	155	147	18
	DISTRICT 04	62	24	60	25	108	108	552	108	82	26
	DISTRICT 05	123	42	120	44	189	143	634	189	143	46
	DISTRICT 06	78	18	77	18	128	109	578	128	109	19
MUNICIPAL TOTALS	MILITARY	0	0	0	0	0	0	0	0	0	0
	CIVILIAN	33	3	32	3	44	41	0	44	41	3
MUNICIPAL TOTALS		715	158	698	164	1195	1012	4042	1195	1012	183
BARNEGAT LIGHT BOROUGH	DISTRICT 01	234	15	224	15	355	325	568	355	325	30
	MILITARY	0	0	0	0	0	0	0	0	0	0
	CIVILIAN	28	1	23	2	50	47	0	50	47	3
MUNICIPAL TOTALS		262	16	247	17	405	372	568	405	372	33
BEACH HAVEN BOROUGH	DISTRICT 01	141	16	139	19	168	149	1072	168	149	19
	MILITARY	0	0	0	0	0	0	0	0	0	0
	CIVILIAN	1	0	1	0	1	1	0	1	1	0
MUNICIPAL TOTALS		142	16	140	19	169	150	1072	169	150	19
BEACHWOOD BOROUGH	DISTRICT 01	58	15	61	15	80	64	664	80	64	16
	DISTRICT 02	34	14	31	14	50	35	815	50	35	15
	DISTRICT 03	20	23	21	23	46	22	674	46	22	24
	DISTRICT 04	35	25	34	27	65	37	1091	65	37	28
	DISTRICT 05	25	17	25	17	47	25	695	47	25	22
	MILITARY	0	0	0	0	0	0	0	0	0	0
MUNICIPAL TOTALS		3	4	3	4	7	3	0	7	3	4
MUNICIPAL TOTALS		175	98	175	100	295	186	3939	295	186	109
BERKELEY TOWNSHIP	DISTRICT 01	32	22	32	27	66	37	172	66	37	29
	DISTRICT 02	27	16	27	16	45	28	888	45	28	17
	DISTRICT 03	6	7	6	7	17	7	397	17	7	10
	DISTRICT 04	25	20	25	20	45	25	953	45	25	20
	DISTRICT 05	10	21	10	20	31	11	669	31	11	20
	DISTRICT 06	27	4	27	4	32	28	967	32	28	4
	DISTRICT 07	25	18	24	18	48	26	992	48	26	22
	DISTRICT 08	82	34	80	33	118	82	754	118	82	36
	DISTRICT 09	45	39	45	38	87	45	812	87	45	42
	DISTRICT 10	21	28	21	26	49	21	808	49	21	28
	DISTRICT 11	12	15	12	15	30	12	561	30	12	18
	DISTRICT 12	31	35	27	35	70	32	748	70	32	38
	DISTRICT 13	66	21	65	23	90	65	803	90	65	25
	DISTRICT 14	16	29	16	30	48	16	672	48	16	32
	DISTRICT 15	22	20	22	20	43	22	585	43	22	21

OCALA COUNTY
OFFICIAL BOARD OF CANVASSER REPORT
PRIMARY ELECTION 06/02/87

OFFICE	GENERAL ASSEMBLY - 9TH DIST						NUMBER OF REGISTERED	NUMBER OF BALLOTS CAST	REP BALLOT CAST	DEM BALLOT CAST
CANDIDATE	(R)	(D)	(R)	(D)	(R)	(D)				
DISTRICT 12	12	5	12	5	12	5	586	17	12	5
DISTRICT 13	27	36	26	35	26	35	759	74	36	38
DISTRICT 14	9	15	10	15	10	15	574	26	10	16
DISTRICT 15	10	13	10	13	10	13	844	23	10	13
MILITARY	0	0	0	0	0	0	0	0	0	0
CIVILIAN	9	10	9	10	9	10	0	20	9	11
MUNICIPAL TOTALS	278	251	273	256	273	256	11394	567	295	272
LACEY TOWNSHIP										
DISTRICT 01	26	21	26	22	26	22	667	49	27	22
DISTRICT 02	29	27	29	26	29	26	959	56	29	27
DISTRICT 03	22	15	21	15	21	15	849	41	23	18
DISTRICT 04	28	24	29	22	29	22	1036	57	30	27
DISTRICT 05	31	28	30	27	30	27	1224	43	24	27
DISTRICT 06	41	20	41	20	41	20	1010	61	41	20
DISTRICT 07	27	12	24	12	24	12	648	42	30	12
DISTRICT 08	20	22	20	20	20	20	884	45	22	23
DISTRICT 09	11	10	11	10	11	10	703	26	13	13
DISTRICT 10	21	18	21	18	21	18	946	43	24	19
DISTRICT 11	106	56	110	57	110	57	573	177	115	82
DISTRICT 12	12	8	12	8	12	8	646	21	13	8
MILITARY	0	0	0	0	0	0	0	0	0	0
CIVILIAN	14	11	14	11	14	11	0	27	15	12
MUNICIPAL TOTALS	388	272	388	268	388	268	10145	1076	624	452
LAKEHURST BOROUGH										
DISTRICT 01	57	20	57	20	57	20	948	84	61	23
MILITARY	0	0	0	0	0	0	0	0	0	0
CIVILIAN	4	0	4	1	4	1	0	7	5	2
MUNICIPAL TOTALS	61	20	61	21	61	21	948	91	66	25
LITTLE EGG HARBOR TOWNSHIP										
DISTRICT 01	57	4	57	4	57	4	659	73	68	5
DISTRICT 02	58	25	50	22	50	22	919	89	62	27
DISTRICT 03	54	38	51	44	51	44	663	117	64	53
DISTRICT 04	47	28	42	27	42	27	717	93	56	37
DISTRICT 05	62	21	61	21	61	21	625	89	67	22
DISTRICT 06	49	37	47	37	47	37	771	108	63	45
DISTRICT 07	51	30	49	30	49	30	712	96	62	34
MILITARY	0	0	0	0	0	0	0	0	0	0
CIVILIAN	8	5	7	5	7	5	0	13	8	5
MUNICIPAL TOTALS	386	188	364	190	364	190	5066	678	450	228
LONG BEACH TOWNSHIP										
DISTRICT 01	82	11	80	11	80	11	886	98	85	11
DISTRICT 02	86	13	84	15	84	15	1087	105	90	15
DISTRICT 03	40	8	39	9	39	9	578	53	44	9
MILITARY	2	0	2	0	2	0	0	2	2	0
CIVILIAN	1	2	1	2	1	2	0	3	1	2

OCEAN COUNTY
OFFICIAL BOARD OF CANVASSER REPORT
PRIMARY ELECTION 06/02/87

GENERAL ASSEMBLY - 9TH DIST

OFFICE	CANDIDATE	(R) HENDRICKSON	(D) SCHMOLL	(R) MORAN	(D) ANDERSON	NUMBER OF REGISTERED	NUMBER OF BALLOTS CAST	REP BALLOT CAST	DEM BALLOT CAST
MUNICIPAL TOTALS		211	34	206	37	2551	259	222	37
MANCHESTER TOWNSHIP									
	DISTRICT 01	32	9	32	9	730	43	34	9
	DISTRICT 02	26	11	26	11	946	43	29	14
	DISTRICT 03	35	12	32	13	856	51	38	13
	DISTRICT 04	71	29	69	31	584	104	73	31
	DISTRICT 05	86	15	85	16	452	104	88	16
	DISTRICT 06	123	36	123	32	619	163	125	38
	DISTRICT 07	49	7	50	7	410	57	50	7
	DISTRICT 08	51	16	51	17	490	72	55	17
	DISTRICT 09	128	26	128	28	682	161	132	29
	DISTRICT 10	71	18	70	17	447	91	73	18
	DISTRICT 11	95	23	92	22	696	119	96	23
	DISTRICT 12	121	22	120	23	647	150	125	25
	DISTRICT 13	121	28	121	27	869	154	125	29
	DISTRICT 14	145	35	141	36	1065	184	146	38
	DISTRICT 15	59	9	61	9	872	69	60	9
	DISTRICT 16	123	36	123	36	1243	164	126	38
	DISTRICT 17	104	34	103	32	722	142	107	35
	DISTRICT 18	111	20	108	19	690	134	113	21
	DISTRICT 19	90	20	88	20	994	112	90	22
	DISTRICT 20	126	52	127	52	1433	184	128	56
	DISTRICT 21	166	88	163	90	1283	262	170	92
	DISTRICT 22	138	26	134	26	716	167	140	27
	DISTRICT 23	116	37	115	41	737	161	118	43
	DISTRICT 24	30	11	28	9	1128	43	32	11
	DISTRICT 25	110	30	107	32	717	146	112	34
	DISTRICT 26	115	42	112	41	772	159	116	43
	DISTRICT 27	49	18	49	18	794	68	49	19
	MILITARY	0	0	0	0	0	0	0	0
	CIVILIAN	59	22	60	23	0	84	61	23
MUNICIPAL TOTALS		2550	732	2518	737	21594	3391	2611	780
OCEAN TOWNSHIP									
	DISTRICT 01	86	17	85	17	868	103	86	17
	DISTRICT 02	73	15	72	17	773	98	81	17
	DISTRICT 03	39	26	39	27	791	72	41	31
	MILITARY	0	0	0	0	0	0	0	0
	CIVILIAN	3	2	3	2	0	6	3	3
MUNICIPAL TOTALS		201	60	199	63	2432	279	211	68
OCEAN GATE BOROUGH									
	DISTRICT 01	145	18	141	18	848	190	170	20
	MILITARY	0	0	0	0	0	0	0	0
	CIVILIAN	1	0	1	0	0	1	1	1
MUNICIPAL TOTALS		146	18	142	18	848	191	171	20
PLUMSTED TOWNSHIP									
	DISTRICT 01	43	19	42	20	1123	67	46	21

OCCL COUNTY
OFFICIAL BOARD OF CANVASSER REPORT
PRIMARY ELECTION 06/02/87

GENERAL ASSEMBLY - 9TH DIST

OFFICE	(R) HENDRICKSON	(D) SCHMOLL	(R) MORAN	(D) ANDERSON	NUMBER OF REGISTERED	NUMBER OF BALLOTS CAST	REP BALLOT CAST	DEM BALLOT CAST
CANDIDATE								
DISTRICT 02	25	6	25	5	575	34	27	7
MILITARY	0	0	0	0	0	0	0	0
CIVILIAN	2	1	2	1	0	3	2	1
MUNICIPAL TOTALS	70	26	69	26	1698	104	75	29
SHIP BOTTOM BOROUGH								
DISTRICT 01	125	23	121	24	946	170	144	26
MILITARY	0	0	0	0	0	0	0	0
CIVILIAN	3	0	4	0	0	5	4	1
MUNICIPAL TOTALS	128	23	125	24	946	175	148	27
SOUTH TOMS RIVER BOROUGH								
DISTRICT 01	9	12	10	12	401	32	10	22
DISTRICT 02	17	31	17	31	798	52	17	35
DISTRICT 03	15	13	14	13	465	33	15	18
MILITARY	0	0	0	0	0	0	0	0
CIVILIAN	3	2	3	3	0	7	3	4
MUNICIPAL TOTALS	44	58	44	59	1664	124	45	79
STAFFORD TOWNSHIP								
DISTRICT 01	34	14	34	15	820	51	35	16
DISTRICT 02	21	11	22	11	770	35	23	12
DISTRICT 03	31	21	31	20	1151	53	31	22
DISTRICT 04	38	33	38	30	931	72	38	34
DISTRICT 05	66	34	65	34	783	104	68	36
DISTRICT 06	36	23	37	23	1096	62	38	24
DISTRICT 07	19	4	20	4	676	25	21	4
MILITARY	0	0	0	0	0	0	0	0
CIVILIAN	8	6	0	6	0	15	8	7
MUNICIPAL TOTALS	253	146	247	143	6227	417	262	155
SURF CITY BOROUGH								
DISTRICT 01	131	12	132	12	974	157	144	13
MILITARY	0	0	0	0	0	0	0	0
CIVILIAN	3	0	3	0	0	4	4	0
MUNICIPAL TOTALS	134	12	135	12	974	161	148	13
TUCKERTON BOROUGH								
DISTRICT 01	82	23	81	24	918	112	86	26
DISTRICT 02	43	7	42	7	486	56	48	8
MILITARY	0	0	0	0	0	0	0	0
CIVILIAN	1	1	1	2	0	3	1	2
MUNICIPAL TOTALS	126	31	124	33	1404	171	135	36
TOTAL COUNTY VOTE	7438	3020	7301	3063	100546	12152	8434	3718
TOTAL COUNTY VOTE INCLUDES MILITARY AND CIVILIAN ABSENTEE BALLOTS.								
TOTAL CIVILIAN ABSENTEE	216	97	202	101	0	360	250	110
TOTAL MILITARY ABSENTEE	2	0	2	0	0	2	2	0

OCEAN COUNTY
OFFICIAL BOARD OF CANVASSER REPORT
PRIMARY ELECTION 06/02/87

GENERAL ASSEMBLY - 10TH DIST

OFFICE	CANDIDATE	(R) GASSER	(D) DOYLE	(R) SINGER	(D) FORD	NUMBER OF REGISTERED	NUMBER OF BALLOTS CAST	REP BALLOT CAST	DEM BALLOT CAST
BAY HEAD BOROUGH	DISTRICT 01	67	11	68	11	796	86	72	14
	MILITARY	0	0	0	0	0	0		
	CIVILIAN	2	1	2	0	0	4	3	1
MUNICIPAL TOTALS		69	12	70	11	796	90	75	15
BRICK TOWNSHIP	DISTRICT 01	24	47	25	45	1121	74	26	48
	DISTRICT 02	11	17	11	16	918	28	11	17
	DISTRICT 03	23	27	23	28	1037	54	26	28
	DISTRICT 04	18	12	19	14	839	34	20	14
	DISTRICT 05	34	9	34	8	824	43	34	9
	DISTRICT 06	7	18	8	17	701	28	10	18
	DISTRICT 07	12	20	13	19	658	36	16	20
	DISTRICT 08	17	38	18	33	1257	58	19	39
	DISTRICT 09	16	13	16	13	479	31	17	14
	DISTRICT 10	22	39	23	37	859	64	25	39
	DISTRICT 11	9	14	9	14	577	23	9	14
	DISTRICT 12	28	26	31	22	1104	60	32	28
	DISTRICT 13	7	19	7	17	890	27	8	19
	DISTRICT 14	16	20	16	20	1364	40	17	23
	DISTRICT 15	7	22	8	23	709	31	8	23
	DISTRICT 16	5	9	5	10	692	15	5	10
	DISTRICT 17	10	22	11	22	1218	35	12	23
	DISTRICT 18	11	7	11	7	652	19	12	7
	DISTRICT 19	20	36	19	37	1073	59	20	39
	DISTRICT 20	19	88	19	85	1199	109	20	89
	DISTRICT 21	19	21	19	19	1086	40	19	21
	DISTRICT 22	6	15	6	15	938	21	6	15
	DISTRICT 23	59	68	59	67	740	132	63	69
	DISTRICT 24	23	31	26	32	758	60	26	34
	DISTRICT 25	30	32	31	33	1278	65	31	34
	DISTRICT 26	36	15	34	14	589	54	37	17
	DISTRICT 27	9	10	9	10	948	19	9	10
	DISTRICT 28	63	94	64	94	868	165	66	99
	DISTRICT 29	14	7	14	7	935	21	14	7
	DISTRICT 30	37	71	38	71	820	119	41	78
	DISTRICT 31	47	53	48	52	709	104	49	55
	DISTRICT 32	9	27	9	26	611	37	9	28
	DISTRICT 33	41	29	42	29	1194	76	47	29
	DISTRICT 34	10	17	12	18	618	30	12	18
MILITARY	0	0	0	0	0	0	0		
CIVILIAN	25	16	27	15	0	46	27	19	
MUNICIPAL TOTALS		744	1009	764	989	30263	1857	803	1054
DOVER TOWNSHIP									
DISTRICT 01		33	29	33	29	538	64	35	29

OC. COUNTY
OFFICIAL BOARD OF CANVASSER REPORT
PRIMARY ELECTION 06/02/87

GENERAL ASSEMBLY - 10TH DIST

OFFICE

CANDIDATE

	(R) GASSER	(D) DOYLE	(R) SINGER	(D) FORD	NUMBER OF REGISTERED	NUMBER OF BALLOTS CAST	REP BALLOT CAST	DEM BALLOT CAST
DISTRICT 02	20	13	22	13	567	35	22	14
DISTRICT 03	12	4	12	4	580	19	14	5
DISTRICT 04	30	8	33	8	926	43	35	8
DISTRICT 05	23	26	22	27	867	51	24	27
DISTRICT 06	49	22	49	22	1033	74	52	22
DISTRICT 07	25	27	25	28	737	56	28	28
DISTRICT 08	37	35	38	36	1222	78	41	37
DISTRICT 09	47	15	45	15	1011	64	48	16
DISTRICT 10	8	8	8	9	477	19	9	10
DISTRICT 11	12	22	12	21	698	35	12	23
DISTRICT 12	38	26	40	26	1172	69	43	26
DISTRICT 13	18	5	18	5	658	26	20	6
DISTRICT 14	17	12	16	12	1096	32	20	12
DISTRICT 15	58	50	61	53	785	117	64	53
DISTRICT 16	14	12	13	12	702	29	15	14
DISTRICT 17	7	14	6	15	708	22	7	15
DISTRICT 18	19	4	21	4	609	29	24	5
DISTRICT 19	28	21	29	21	1108	53	31	22
DISTRICT 20	41	27	43	27	1302	74	44	30
DISTRICT 21	22	15	24	14	915	43	27	16
DISTRICT 22	78	86	81	84	1051	175	87	88
DISTRICT 23	17	14	16	14	1171	34	19	15
DISTRICT 24	14	11	16	10	868	28	17	11
DISTRICT 25	46	44	48	43	721	96	51	45
DISTRICT 26	12	62	14	63	773	86	18	68
DISTRICT 27	15	14	16	14	921	30	16	14
DISTRICT 28	18	11	17	11	750	30	19	11
DISTRICT 29	21	22	31	22	986	55	33	22
DISTRICT 30	12	32	15	30	588	48	16	32
DISTRICT 31	8	16	9	17	496	29	11	18
DISTRICT 32	31	15	33	13	713	52	37	15
DISTRICT 33	14	17	14	17	814	35	16	19
DISTRICT 34	34	19	32	20	649	56	36	20
DISTRICT 35	11	19	12	20	699	34	14	20
DISTRICT 36	21	22	22	21	854	46	23	23
DISTRICT 37	13	19	13	19	522	35	16	19
DISTRICT 38	14	16	12	16	654	34	18	16
DISTRICT 39	8	12	10	11	771	22	10	12
DISTRICT 40	32	18	32	18	602	50	32	18
DISTRICT 41	16	22	18	23	651	44	21	23
DISTRICT 42	12	13	12	13	684	28	15	13
MILITARY	2	0	2	0	0	2	2	0
CIVILIAN	25	30	27	30	0	61	29	32
MUNICIPAL TOTALS	1032	929	1074	930	33649	2143	1171	972
LAKESWOOD TOWNSHIP								
DISTRICT 01	4	14	4	12	561	20	4	16

OCEAN COUNTY
OFFICIAL BOARD OF CANVASSER REPORT
PRIMARY ELECTION 06/02/87

GENERAL ASSEMBLY - 10TH DIST

OFFICE

CANDIDATE	(R) GASSER	(D) DOYLE	(R) SINGER	(D) FORD	NUMBER OF REGISTERED	NUMBER OF BALLOTS CAST	REP BALLOT CAST	DEM BALLOT CAST
DISTRICT 02	7	14	9	14	475	24	9	15
DISTRICT 03	132	79	139	78	835	223	144	79
DISTRICT 04	10	45	10	44	625	67	13	54
DISTRICT 05	19	19	20	17	682	39	19	20
DISTRICT 06	24	19	23	18	952	49	26	23
DISTRICT 07	5	17	5	16	946	22	5	17
DISTRICT 08	14	20	13	20	443	39	18	21
DISTRICT 09	17	11	17	11	616	30	18	12
DISTRICT 10	10	4	10	4	471	19	15	4
DISTRICT 11	8	7	8	7	597	19	10	9
DISTRICT 12	31	56	32	53	912	92	34	58
DISTRICT 13	4	15	4	16	890	20	4	16
DISTRICT 14	16	27	20	27	401	52	24	28
DISTRICT 15	20	25	21	25	939	49	24	25
DISTRICT 16	24	14	25	12	1156	42	27	15
DISTRICT 17	16	21	15	19	663	40	17	23
DISTRICT 18	44	37	43	38	512	82	44	38
DISTRICT 19	61	34	62	34	566	96	62	34
DISTRICT 20	55	20	60	20	481	82	62	20
DISTRICT 21	17	51	18	50	431	72	20	52
DISTRICT 22	67	25	69	25	586	101	74	27
DISTRICT 23	77	38	81	37	586	122	84	38
DISTRICT 24	107	99	111	97	851	219	117	102
DISTRICT 25	17	25	15	25	718	43	18	25
DISTRICT 26	17	11	15	9	716	29	17	12
DISTRICT 27	1	3	1	3	995	4	1	3
MILITARY	0	0	0	0	0	0	0	0
CIVILIAN	75	39	74	36	0	115	75	40
MUNICIPAL TOTALS	899	789	927	767	18606	1811	985	826
LAVALLETTA BOROUGH								
DISTRICT 01	207	79	212	77	1840	409	331	78
MILITARY	0	0	0	0	0	0	0	0
CIVILIAN	9	3	9	3	0	16	13	3
MUNICIPAL TOTALS	216	82	221	80	1840	425	344	81
MANTOLOKING BOROUGH								
DISTRICT 01	80	2	86	2	351	94	92	2
MILITARY	0	0	0	0	0	0	0	0
CIVILIAN	3	0	3	0	0	3	3	0
MUNICIPAL TOTALS	83	2	89	2	351	97	95	2
PINE BEACH BOROUGH								
DISTRICT 01	152	77	155	74	1190	261	178	83
MILITARY	0	0	0	0	0	0	0	0
CIVILIAN	0	0	0	0	0	0	0	0
MUNICIPAL TOTALS	152	77	155	74	1190	261	178	83
POINT PLEASANT BOROUGH								
DISTRICT 01	5	11	5	11	572	16	5	11

OCCL... COUNTY
OFFICIAL BOARD OF CANVASSER REPORT
PRIMARY ELECTION 06/02/87

OFFICE	GENERAL ASSEMBLY - 10TH DIST	(R) GASSER	(D) DOYLE	(R) SINGER	(D) FORD	NUMBER OF REGISTERED	NUMBER OF BALLOTS CAST	REP BALLOT CAST	DEM BALLOT CAST
CANDIDATE									
DISTRICT 02		18	8	17	8	723	26	18	8
DISTRICT 03		17	10	16	11	621	30	18	12
DISTRICT 04		21	15	20	15	478	37	22	15
DISTRICT 05		28	16	27	16	689	45	29	16
DISTRICT 06		17	3	17	3	416	22	19	3
DISTRICT 07		15	13	16	13	552	30	17	13
DISTRICT 08		23	10	24	10	869	34	24	10
DISTRICT 09		34	11	33	10	573	45	34	11
DISTRICT 10		18	21	18	21	666	39	18	21
DISTRICT 11		23	19	22	19	668	42	23	19
DISTRICT 12		26	18	26	18	735	52	33	19
DISTRICT 13		11	12	11	12	406	23	11	12
DISTRICT 14		8	9	7	9	411	17	8	9
DISTRICT 15		21	11	22	11	616	33	22	11
MILITARY		1	0	1	0	0	1	1	0
CIVILIAN		10	5	10	5	0	16	11	5
MUNICIPAL TOTALS		296	192	292	192	8995	508	313	195
POINT PLEASANT BEACH BORO									
DISTRICT 01		16	9	18	9	397	29	20	9
DISTRICT 02		20	8	20	8	545	34	25	9
DISTRICT 03		43	14	39	13	1004	462	395	67
DISTRICT 04		45	18	46	19	941	70	50	20
MILITARY		0	0	0	0	0	0	0	0
CIVILIAN		4	3	4	3	0	7	4	3
MUNICIPAL TOTALS		128	52	127	52	2887	602	494	108
SEASIDE HEIGHTS BOROUGH									
DISTRICT 01		134	20	139	19	975	188	167	21
MILITARY		0	0	0	0	0	0	0	0
CIVILIAN		3	1	3	1	0	4	3	1
MUNICIPAL TOTALS		137	21	142	20	975	192	170	22
SEASIDE PARK BOROUGH									
DISTRICT 01		56	11	58	8	625	378	288	90
DISTRICT 02		81	24	85	24	950	120	96	24
MILITARY		0	0	0	0	0	0	0	0
CIVILIAN		7	1	8	1	0	11	10	1
MUNICIPAL TOTALS		144	36	151	33	1575	509	394	115
TOTAL COUNTY VOTE		3900	3201	4012	3150	101127	8495	5022	3473
TOTAL COUNTY VOTE INCLUDES MILITARY AND CIVILIAN ABSENTEE BALLOTS.									
TOTAL CIVILIAN ABSENTEE		163	99	167	94	0	283	178	105
TOTAL MILITARY ABSENTEE		3	0	3	0	0	3	3	0

**OCEAN COUNTY
OFFICIAL BOARD OF CANVASSER REPORT
PRIMARY ELECTION 06/02/87**

M. Dean Haines
Office of the County Clerk

OFFICE	SURROGATE			NUMBER OF REGISTERED	NUMBER OF BALLOTS CAST	REP BALLOT CAST	DEM BALLOT CAST
	(R) SUSSEX	(D) SCARPELLI					
CANDIDATE							
TOWNSHIP							
BARNEGAT							
DISTRICT 01	186	35		883	303	263	40
DISTRICT 02	131	26		708	258	227	31
DISTRICT 03	80	15		687	165	147	18
DISTRICT 04	62	23		552	108	82	26
DISTRICT 05	118	43		634	189	143	46
DISTRICT 06	77	18		578	128	109	19
MILITARY	0	0		0	0	0	0
CIVILIAN	35	3		0	44	41	3
MUNICIPAL TOTALS	689	163		4042	1195	1012	183
BARNEGAT LIGHT BOROUGH							
DISTRICT 01	228	15		568	355	325	30
MILITARY	0	0		0	0	0	0
CIVILIAN	26	1		0	50	47	3
MUNICIPAL TOTALS	254	16		568	405	372	33
BAY HEAD BOROUGH							
DISTRICT 01	68	12		796	86	72	14
MILITARY	0	0		0	0	0	0
CIVILIAN	2	1		0	4	3	1
MUNICIPAL TOTALS	70	13		796	90	75	15
BEACH HAVEN BOROUGH							
DISTRICT 01	140	16		1072	168	149	19
MILITARY	0	0		0	0	0	0
CIVILIAN	1	0		0	1	1	0
MUNICIPAL TOTALS	141	16		1072	169	150	19
BEACHWOOD BOROUGH							
DISTRICT 01	54	15		664	80	64	16
DISTRICT 02	32	14		815	50	35	15
DISTRICT 03	21	24		674	46	22	24
DISTRICT 04	35	25		1091	65	37	28
DISTRICT 05	25	18		695	47	25	22
MILITARY	0	0		0	0	0	0
CIVILIAN	3	4		0	7	3	4
MUNICIPAL TOTALS	170	100		3939	295	186	109
BERKELEY TOWNSHIP							
DISTRICT 01	30	23		172	66	37	29
DISTRICT 02	27	15		888	45	28	17
DISTRICT 03	5	7		397	17	7	10
DISTRICT 04	25	18		953	45	25	20
DISTRICT 05	10	20		669	31	11	20
DISTRICT 06	26	4		967	32	28	4
DISTRICT 07	25	18		992	48	26	22
DISTRICT 08	82	35		754	118	82	36
DISTRICT 09	44	38		812	87	45	42
DISTRICT 10	19	27		808	49	21	28

OCE. COUNTY
OFFICIAL BOARD OF CANVASSER REPORT
PRIMARY ELECTION 06/02/87

OFFICE	SURROGATE	(R)	(D)	NUMBER OF REGISTERED	NUMBER OF BALLOTS CAST	REP BALLOT CAST	DEM BALLOT CAST
CANDIDATE							
DISTRICT 11	SUSSEX	11	15	561	30	12	18
DISTRICT 12	SCARPELLI	30	37	748	70	32	38
DISTRICT 13		65	23	803	90	65	25
DISTRICT 14		16	27	672	48	16	32
DISTRICT 15		22	21	585	43	22	21
DISTRICT 16		15	9	532	25	16	9
DISTRICT 17		16	36	741	56	17	39
DISTRICT 18		38	33	789	83	41	42
DISTRICT 19		53	25	700	88	57	31
DISTRICT 20		8	6	365	14	8	6
DISTRICT 21		18	35	548	351	99	252
DISTRICT 22		35	29	683	66	35	31
DISTRICT 23		12	21	637	34	12	22
DISTRICT 24		35	53	914	92	36	56
DISTRICT 25		47	59	1032	108	48	60
DISTRICT 26		63	36	1053	58	35	23
DISTRICT 27		60	71	863	136	64	72
DISTRICT 28		36	24	656	62	40	22
DISTRICT 29		39	38	647	79	41	38
DISTRICT 30		6	6	122	12	6	6
MILITARY		0	0	0	0	0	0
CIVILIAN		29	22	0	52	29	23
TOTALS		947	831	21063	2135	1041	1094
MUNICIPAL TOTALS							
BRICK TOWNSHIP							
DISTRICT 01		25	44	1121	74	26	48
DISTRICT 02		11	15	918	28	11	17
DISTRICT 03		21	27	1037	54	26	28
DISTRICT 04		18	14	839	34	20	14
DISTRICT 05		34	8	824	43	34	9
DISTRICT 06		7	16	701	28	10	18
DISTRICT 07		12	19	658	36	16	20
DISTRICT 08		16	38	1257	58	19	39
DISTRICT 09		16	13	479	31	17	14
DISTRICT 10		23	36	859	64	25	39
DISTRICT 11		9	13	577	23	9	14
DISTRICT 12		30	23	1104	60	32	28
DISTRICT 13		7	17	890	27	8	19
DISTRICT 14		16	22	1364	40	17	23
DISTRICT 15		7	23	709	31	8	23
DISTRICT 16		5	8	692	15	5	10
DISTRICT 17		10	23	1218	35	12	23
DISTRICT 18		11	7	652	19	12	7
DISTRICT 19		19	33	1073	59	20	39
DISTRICT 20		19	87	1199	109	20	89
DISTRICT 21		19	21	1085	40	19	21

OCEAN COUNTY
OFFICIAL BOARD OF CANVASSER REPORT
PRIMARY ELECTION 06/02/87

OFFICE		SURROGATE		NUMBER OF REGISTERED	NUMBER OF BALLOTS CAST	REP BALLOT CAST	DEM BALLOT CAST
CANDIDATE	(R)	(D)	SCARPELLI				
DISTRICT 22	6	15		938	21	6	15
DISTRICT 23	59	69		740	132	63	69
DISTRICT 24	22	34		758	60	26	34
DISTRICT 25	30	32		1278	65	31	34
DISTRICT 26	36	15		589	54	37	17
DISTRICT 27	9	10		948	19	9	10
DISTRICT 28	64	93		868	165	66	99
DISTRICT 29	14	7		935	21	14	7
DISTRICT 30	37	71		820	119	41	78
DISTRICT 31	47	53		709	104	49	55
DISTRICT 32	9	28		611	37	9	28
DISTRICT 33	44	29		1194	76	47	29
DISTRICT 34	12	17		618	30	12	18
MILITARY	0	0		0	0		
CIVILIAN	26	17		0	46	27	19
MUNICIPAL TOTALS	750	997		30263	1857	803	1054
DOVER TOWNSHIP							
DISTRICT 01	31	27		538	64	35	29
DISTRICT 02	20	13		567	36	22	14
DISTRICT 03	11	2		580	19	14	5
DISTRICT 04	33	8		926	43	35	8
DISTRICT 05	23	24		867	51	24	27
DISTRICT 06	47	22		1033	74	52	22
DISTRICT 07	24	28		737	56	28	28
DISTRICT 08	37	35		1222	78	41	37
DISTRICT 09	46	15		1011	64	48	16
DISTRICT 10	7	9		477	19	9	10
DISTRICT 11	12	21		698	35	12	23
DISTRICT 12	40	24		1172	69	43	26
DISTRICT 13	18	5		658	26	20	6
DISTRICT 14	17	12		1096	32	20	12
DISTRICT 15	58	49		785	117	64	53
DISTRICT 16	15	13		702	29	15	14
DISTRICT 17	6	14		708	22	7	15
DISTRICT 18	20	4		609	29	24	5
DISTRICT 19	29	21		1108	53	31	22
DISTRICT 20	42	28		1302	74	44	30
DISTRICT 21	25	11		915	43	27	16
DISTRICT 22	77	81		1051	175	87	88
DISTRICT 23	18	13		1171	34	19	15
DISTRICT 24	12	11		868	28	17	11
DISTRICT 25	46	43		721	96	51	45
DISTRICT 26	12	65		773	86	18	68
DISTRICT 27	15	12		921	30	16	14
DISTRICT 28	17	10		750	30	19	11

OCEAN COUNTY
 OFFICIAL BOARD OF CANVASSER REPORT
 PRIMARY ELECTION 06/02/87

M. Dean Haines
 Office of the County Clerk

OFFICE	SURROGATE	(R)	(D)	NUMBER OF REGISTERED	NUMBER OF BALLOTS CAST	REP BALLOT CAST	DEM BALLOT CAST
			SCARPELLI				
		SUSSEX					
CANDIDATE							
DISTRICT 29		31	22	986	55	33	22
DISTRICT 30		12	32	588	48	16	32
DISTRICT 31		8	17	496	29	11	18
DISTRICT 32		33	14	713	52	37	15
DISTRICT 33		15	18	814	35	16	19
DISTRICT 34		32	19	649	56	36	20
DISTRICT 35		11	19	699	34	14	20
DISTRICT 36		20	21	854	46	23	23
DISTRICT 37		12	20	522	35	16	19
DISTRICT 38		10	16	654	34	18	16
DISTRICT 39		8	11	771	22	10	12
DISTRICT 40		31	17	602	50	32	18
DISTRICT 41		15	23	651	44	21	23
DISTRICT 42		11	13	684	28	15	13
MILITARY		2	0	0	2	2	0
CIVILIAN		26	29	0	61	29	32
MUNICIPAL TOTALS		1035	911	33649	2143	1171	972
EAGLESWOOD TOWNSHIP							
DISTRICT 01		99	20	657	132	109	23
MILITARY		0	0	0	0	0	0
CIVILIAN		0	0	0	0	0	0
MUNICIPAL TOTALS		99	20	657	132	109	23
HARVEY CEDARS							
DISTRICT 01		41	7	344	50	43	7
MILITARY		0	0	0	0	0	0
CIVILIAN		0	0	0	2	2	0
MUNICIPAL TOTALS		41	7	344	52	45	7
ISLAND HEIGHTS BOROUGH							
DISTRICT 01		50	21	970	79	54	25
MILITARY		0	0	0	0	0	0
CIVILIAN		2	4	0	6	2	4
MUNICIPAL TOTALS		52	25	970	85	56	29
JACKSON TOWNSHIP							
DISTRICT 01		25	14	598	40	26	14
DISTRICT 02		23	22	1170	46	25	23
DISTRICT 03		29	11	834	42	31	11
DISTRICT 04		30	8	672	41	33	8
DISTRICT 05		12	13	932	27	12	15
DISTRICT 06		8	12	680	22	9	13
DISTRICT 07		10	13	793	28	11	17
DISTRICT 08		12	14	715	27	12	15
DISTRICT 09		17	17	1383	36	15	21
DISTRICT 10		15	5	611	24	18	6
DISTRICT 11		26	44	443	72	26	46
DISTRICT 12		11	5	586	17	12	5

**OCEAN COUNTY
OFFICIAL BOARD OF CANVASSER REPORT
PRIMARY ELECTION 06/02/87**

M. Dean Haines
Office of the County Clerk

OFFICE	SURROGATE		NUMBER OF REGISTERED	NUMBER OF BALLOTS CAST	REP BALLOT CAST	DEM BALLOT CAST
CANDIDATE	(R) SUSSEX	(D) SCARPELLI				
DISTRICT 13	26	36	759	74	36	38
DISTRICT 14	10	13	574	26	10	16
DISTRICT 15	10	13	644	23	10	13
MILITARY	0	0	0	0	0	0
CIVILIAN	9	10	0	20	9	11
MUNICIPAL TOTALS	273	250	11394	567	295	272
LACEY TOWNSHIP						
DISTRICT 01	26	22	667	49	27	22
DISTRICT 02	29	25	959	58	29	27
DISTRICT 03	21	15	849	41	23	18
DISTRICT 04	29	24	1036	57	30	27
DISTRICT 05	31	25	1224	431	242	189
DISTRICT 06	41	20	1010	61	41	20
DISTRICT 07	25	12	648	42	30	12
DISTRICT 08	20	22	884	45	22	23
DISTRICT 09	12	10	703	26	13	13
DISTRICT 10	19	18	946	43	24	19
DISTRICT 11	111	58	573	177	115	62
DISTRICT 12	13	8	646	21	13	8
MILITARY	0	0	0	0	0	0
CIVILIAN	13	10	0	27	15	12
MUNICIPAL TOTALS	390	269	10145	1076	624	452
LAKEHURST BOROUGH						
DISTRICT 01	56	20	948	84	61	23
MILITARY	0	0	0	0	0	0
CIVILIAN	4	0	0	7	5	2
MUNICIPAL TOTALS	60	20	948	91	66	25
LAKESIDE TOWNSHIP						
DISTRICT 01	3	12	561	20	4	16
DISTRICT 02	8	13	475	24	9	15
DISTRICT 03	133	79	835	223	144	79
DISTRICT 04	9	44	625	67	13	54
DISTRICT 05	19	17	682	39	19	20
DISTRICT 06	24	16	952	49	26	23
DISTRICT 07	5	15	946	22	5	17
DISTRICT 08	15	19	443	39	18	21
DISTRICT 09	17	9	616	30	18	12
DISTRICT 10	10	4	471	19	15	4
DISTRICT 11	7	7	597	19	10	9
DISTRICT 12	31	47	912	92	34	58
DISTRICT 13	4	14	890	20	4	16
DISTRICT 14	18	22	401	52	24	28
DISTRICT 15	23	25	939	49	24	25
DISTRICT 16	23	12	1156	42	27	15
DISTRICT 17	15	20	663	40	17	23

OC. COUNTY
OFFICIAL BOARD OF CANVASSER REPORT
PRIMARY ELECTION 06/02/87

OFFICE	SURROGATE	(R)	(D)	NUMBER OF REGISTERED	NUMBER OF BALLOTS CAST	REP BALLOT CAST	DEM BALLOT CAST
CANDIDATE	SUSSEX	SCARPELLI					
DISTRICT 18	43	38		512	82	44	38
DISTRICT 19	58	34		566	96	62	34
DISTRICT 20	57	20		481	82	62	20
DISTRICT 21	15	49		431	72	20	52
DISTRICT 22	68	25		586	101	74	27
DISTRICT 23	83	37		586	122	84	38
DISTRICT 24	114	99		851	219	117	102
DISTRICT 25	18	25		718	43	18	25
DISTRICT 26	16	9		716	29	17	12
DISTRICT 27	1	3		995	4	1	3
MILITARY	0	0		0	0	0	0
CIVILIAN	75	40		0	115	75	40
MUNICIPAL TOTALS	912	754		18606	1811	985	826
LAVALLETTE BOROUGH							
DISTRICT 01	204	68		1840	409	331	78
MILITARY	0	0		0	0	0	0
CIVILIAN	9	3		0	16	13	3
MUNICIPAL TOTALS	213	71		1840	425	344	81
LITTLE EGG HARBOR TWP							
DISTRICT 01	53	5		659	73	68	5
DISTRICT 02	50	21		919	89	62	27
DISTRICT 03	50	40		863	117	64	53
DISTRICT 04	44	32		717	93	56	37
DISTRICT 05	59	21		625	89	67	22
DISTRICT 06	47	39		771	108	63	45
DISTRICT 07	47	31		712	96	62	34
MILITARY	0	0		0	0	0	0
CIVILIAN	8	5		0	13	8	5
MUNICIPAL TOTALS	358	194		5066	678	450	228
LONG BEACH TOWNSHIP							
DISTRICT 01	80	10		886	96	85	11
DISTRICT 02	84	13		1087	105	90	15
DISTRICT 03	41	8		578	53	44	9
MILITARY	2	0		0	2	2	0
CIVILIAN	1	2		0	3	1	2
MUNICIPAL TOTALS	208	33		2551	259	222	37
MANCHESTER TOWNSHIP							
DISTRICT 01	32	9		730	43	34	9
DISTRICT 02	26	9		946	43	29	14
DISTRICT 03	32	12		856	51	38	13
DISTRICT 04	70	30		584	104	73	31
DISTRICT 05	85	15		452	104	88	16
DISTRICT 06	123	36		619	163	125	38
DISTRICT 07	50	7		410	57	50	7
DISTRICT 08	50	17		490	72	55	17

**OCEAN COUNTY
OFFICIAL BOARD OF CANVASSER REPORT
PRIMARY ELECTION 06/02/87**

M. Dean Haines
Office of the County Clerk

OFFICE		SURROGATE				NUMBER OF REGISTERED	NUMBER OF BALLOTS CAST	REP BALLOT CAST	DEM BALLOT CAST
CANDIDATE	(R)	(D)	SUSSEX	SCARPELLI					
DISTRICT 09	124	28			682	161	132	29	
DISTRICT 10	72	16			447	91	73	18	
DISTRICT 11	94	22			696	119	96	23	
DISTRICT 12	123	22			647	150	125	25	
DISTRICT 13	122	27			869	154	125	29	
DISTRICT 14	144	35			1065	184	146	38	
DISTRICT 15	61	9			872	69	60	9	
DISTRICT 16	122	38			1243	164	126	38	
DISTRICT 17	103	32			722	142	107	35	
DISTRICT 18	105	20			690	134	113	21	
DISTRICT 19	89	20			994	112	90	22	
DISTRICT 20	127	53			1433	184	128	56	
DISTRICT 21	160	88			1283	262	170	92	
DISTRICT 22	128	26			716	167	140	27	
DISTRICT 23	109	40			737	161	118	43	
DISTRICT 24	28	11			1128	43	32	11	
DISTRICT 25	108	32			717	146	112	34	
DISTRICT 26	111	42			772	159	116	43	
DISTRICT 27	48	18			794	68	49	19	
MILITARY	0	0			0	0	0	0	
CIVILIAN	60	23			0	84	61	23	
MUNICIPAL TOTALS	2506	737			21594	3391	2611	780	
MANTOLOKING BOROUGH									
DISTRICT 01	79	2			351	94	92	2	
MILITARY	0	0			0	0	0	0	
CIVILIAN	3	0			0	3	3	0	
MUNICIPAL TOTALS	82	2			351	97	95	2	
OCEAN TOWNSHIP									
DISTRICT 01	85	17			868	103	86	17	
DISTRICT 02	71	17			773	98	81	17	
DISTRICT 03	40	24			791	72	41	31	
MILITARY	0	0			0	0	0	0	
CIVILIAN	3	3			0	6	3	3	
MUNICIPAL TOTALS	199	61			2432	279	211	68	
OCEAN GATE BOROUGH									
DISTRICT 01	139	18			848	190	170	20	
MILITARY	0	0			0	0	0	0	
CIVILIAN	1	0			0	1	1	0	
MUNICIPAL TOTALS	140	18			848	191	171	20	
PINE BEACH BOROUGH									
DISTRICT 01	149	73			1190	261	178	83	
MILITARY	0	0			0	0	0	0	
CIVILIAN	0	0			0	0	0	0	
MUNICIPAL TOTALS	149	73			1190	261	178	83	
PLUMSTED TOWNSHIP									
DISTRICT 01	42	21			1123	67	46	21	

OCLEND COUNTY
OFFICIAL BOARD OF CANVASSER REPORT
PRIMARY ELECTION 06/02/87

OFFICE	SURROGATE		NUMBER OF REGISTERED	NUMBER OF BALLOTS CAST	REP BALLOT CAST	DEM BALLOT CAST
	(R) SUSSEX	(D) SCARPELLI				
CANDIDATE						
DISTRICT 02	25	6	575	34	27	7
MILITARY	0	0	0	0		
CIVILIAN	2	1	0	3	2	1
MUNICIPAL TOTALS	69	28	1698	104	75	29
POINT PLEASANT BOROUGH						
DISTRICT 01	5	11	572	18	5	11
DISTRICT 02	18	8	723	26	18	8
DISTRICT 03	16	11	621	30	18	12
DISTRICT 04	19	15	478	37	22	15
DISTRICT 05	27	14	689	45	29	16
DISTRICT 06	17	2	416	22	19	3
DISTRICT 07	16	13	552	30	17	13
DISTRICT 08	23	10	869	34	24	10
DISTRICT 09	33	11	573	45	34	11
DISTRICT 10	18	20	668	39	18	21
DISTRICT 11	23	19	668	42	23	19
DISTRICT 12	26	18	735	52	33	19
DISTRICT 13	11	12	406	23	11	12
DISTRICT 14	8	7	411	17	8	9
DISTRICT 15	22	11	616	33	22	11
MILITARY	1	0	0	1	1	
CIVILIAN	10	5	0	16	11	5
MUNICIPAL TOTALS	293	187	8995	508	313	195
POINT PLEASANT BEACH BORO						
DISTRICT 01	17	9	397	29	20	9
DISTRICT 02	20	7	545	34	25	9
DISTRICT 03	40	14	1004	462	395	67
DISTRICT 04	44	19	941	70	50	20
MILITARY	0	0	0	0		
CIVILIAN	4	3	0	7	4	3
MUNICIPAL TOTALS	125	52	2887	602	494	108
SEASIDE HEIGHTS BOROUGH						
DISTRICT 01	128	19	975	188	167	21
MILITARY	0	0	0	0		
CIVILIAN	3	1	0	4	3	1
MUNICIPAL TOTALS	131	20	975	192	170	22
SEASIDE PARK BOROUGH						
DISTRICT 01	57	9	625	378	288	90
DISTRICT 02	81	23	950	120	96	24
MILITARY	0	0	0	0		
CIVILIAN	8	1	0	11	10	1
MUNICIPAL TOTALS	146	33	1575	509	394	115
SHIP BOTTOM BOROUGH						
DISTRICT 01	120	24	946	170	144	26
MILITARY	0	0	0	0		

**OCEAN COUNTY
OFFICIAL BOARD OF CANVASSER REPORT
PRIMARY ELECTION 06/02/87**

M. Dean Haines
Office of the County Clerk

OFFICE	SURROGATE		NUMBER OF REGISTERED	NUMBER OF BALLOTS CAST	REP BALLOT CAST	DEM BALLOT CAST
	(R)	(D)				
CANDIDATE	SUSSEX	SCARPELLI				
CIVILIAN	4	0	0	5	4	1
MUNICIPAL TOTALS	124	24	946	175	148	27
SOUTH TOMS RIVER BOROUGH						
DISTRICT 01	8	14	401	32	10	22
DISTRICT 02	17	32	798	52	17	35
DISTRICT 03	14	16	465	33	15	18
MILITARY	0	0	0	0	0	0
CIVILIAN	3	2	0	7	3	4
MUNICIPAL TOTALS	42	64	1684	124	45	79
STAFFORD TOWNSHIP						
DISTRICT 01	34	14	820	51	35	16
DISTRICT 02	23	11	770	35	23	12
DISTRICT 03	30	20	1151	53	31	22
DISTRICT 04	37	31	931	72	38	34
DISTRICT 05	65	34	783	104	68	36
DISTRICT 06	37	22	1098	62	38	24
DISTRICT 07	19	4	676	25	21	4
MILITARY	0	0	0	0	0	0
CIVILIAN	8	7	0	15	8	7
MUNICIPAL TOTALS	253	143	6227	417	262	155
SURF CITY BOROUGH						
DISTRICT 01	130	13	974	157	144	13
MILITARY	0	0	0	0	0	0
CIVILIAN	3	0	0	4	4	0
MUNICIPAL TOTALS	133	13	974	161	148	13
TUCKERTON BOROUGH						
DISTRICT 01	79	24	918	112	86	26
DISTRICT 02	41	7	486	56	48	8
MILITARY	0	0	0	0	0	0
CIVILIAN	1	1	0	3	1	2
MUNICIPAL TOTALS	121	32	1404	171	135	36
TOTAL COUNTY VOTE	11175	6177	201673	20647	13456	7191
TOTAL COUNTY VOTE INCLUDES MILITARY AND CIVILIAN ABSENTEE BALLOTS.						
TOTAL CIVILIAN ABSENTEE	382	198	0	643	428	215
TOTAL MILITARY ABSENTEE	5	0	0	5	5	0

OCEAN COUNTY
OFFICIAL BOARD OF CANVASSER REPORT
PRIMARY ELECTION 06/02/87

OFFICE	FREEHOLDER			NUMBER OF REGISTERED	NUMBER OF BALLOTS CAST	REP BALLOT CAST	DEM BALLOT CAST
	(R) VICARI	(D) PALKOSKI					
CANDIDATE							
BARNEGAT TOWNSHIP							
DISTRICT 01	189	36		883	303	263	40
DISTRICT 02	128	27		708	258	227	31
DISTRICT 03	85	14		687	165	147	18
DISTRICT 04	62	24		552	108	82	26
DISTRICT 05	121	43		634	189	143	46
DISTRICT 06	79	19		578	128	109	19
MILITARY	0	0		0	0		
CIVILIAN	33	3		0	44	41	3
MUNICIPAL TOTALS	697	166		4042	1195	1012	183
BARNEGAT LIGHT BOROUGH							
DISTRICT 01	224	14		568	355	325	30
MILITARY	0	0		0	0		
CIVILIAN	26	1		0	50	47	3
MUNICIPAL TOTALS	250	15		568	405	372	33
BAY HEAD BOROUGH							
DISTRICT 01	67	11		796	86	72	14
MILITARY	0	0		0	0		
CIVILIAN	2	1		0	4	3	1
MUNICIPAL TOTALS	69	12		796	90	75	15
BEACH HAVEN BOROUGH							
DISTRICT 01	139	16		1072	168	149	19
MILITARY	0	0		0	0		
CIVILIAN	1	0		0	1	1	
MUNICIPAL TOTALS	140	16		1072	169	150	19
BEACHWOOD BOROUGH							
DISTRICT 01	57	15		664	80	64	16
DISTRICT 02	34	13		815	50	35	15
DISTRICT 03	21	23		674	46	22	24
DISTRICT 04	35	25		1091	65	37	28
DISTRICT 05	25	17		695	47	25	22
MILITARY	0	0		0	0		
CIVILIAN	3	4		0	7	3	4
MUNICIPAL TOTALS	175	97		3939	295	186	109
BERKELEY TOWNSHIP							
DISTRICT 01	34	23		172	66	37	29
DISTRICT 02	27	12		888	45	28	17
DISTRICT 03	5	7		397	17	7	10
DISTRICT 04	25	18		953	45	25	20
DISTRICT 05	10	18		669	31	11	20
DISTRICT 06	26	4		967	32	28	4
DISTRICT 07	23	16		992	48	26	22
DISTRICT 08	80	33		754	118	82	36
DISTRICT 09	45	37		812	87	45	42
DISTRICT 10	20	24		808	49	21	28

OCEAN COUNTY
 OFFICIAL BOARD OF CANVASSER REPORT
 PRIMARY ELECTION 06/02/87

M. Dean Haines
 Office of the County Clerk

OFFICE	CANDIDATE	(R) VICARI	(D) PALKOSKI	NUMBER OF REGISTERED	NUMBER OF BALLOTS CAST	REP BALLOT CAST	DEM BALLOT CAST	
FREEHOLDER	DISTRICT 11	12	13	561	30	12	18	
	DISTRICT 12	32	32	748	70	32	38	
	DISTRICT 13	67	18	803	90	65	25	
	DISTRICT 14	16	29	672	48	16	32	
	DISTRICT 15	21	21	585	43	22	21	
	DISTRICT 16	16	6	532	25	16	9	
	DISTRICT 17	16	33	741	56	17	39	
	DISTRICT 18	39	33	789	83	41	42	
	DISTRICT 19	52	26	700	88	57	31	
	DISTRICT 20	8	5	365	14	8	6	
	DISTRICT 21	18	31	548	351	99	252	
	DISTRICT 22	34	29	683	66	35	31	
	DISTRICT 23	12	19	637	34	12	22	
	DISTRICT 24	36	50	914	92	36	56	
	DISTRICT 25	47	51	1032	108	48	60	
	DISTRICT 26	63	36	1053	58	35	23	
	DISTRICT 27	61	64	863	136	64	72	
	DISTRICT 28	39	19	656	62	40	22	
	DISTRICT 29	40	35	647	79	41	38	
	DISTRICT 30	6	6	122	12	6	6	
	MILITARY	0	0	0	0	0	0	
	CIVILIAN	29	19	0	52	29	23	
	MUNICIPAL TOTALS	959	767	21063	2135	1041	1094	
	BRICK TOWNSHIP	DISTRICT 01	23	44	1121	74	26	48
		DISTRICT 02	9	15	918	28	11	17
		DISTRICT 03	23	24	1037	54	26	28
		DISTRICT 04	19	14	839	34	20	14
		DISTRICT 05	33	8	824	43	34	9
		DISTRICT 06	10	17	701	28	10	18
		DISTRICT 07	14	17	658	36	16	20
DISTRICT 08		18	35	1257	58	19	39	
DISTRICT 09		15	14	479	31	17	14	
DISTRICT 10		22	36	859	64	25	39	
DISTRICT 11		9	14	577	23	9	14	
DISTRICT 12		29	23	1104	60	32	28	
DISTRICT 13		8	14	890	27	8	19	
DISTRICT 14		17	19	1364	40	17	23	
DISTRICT 15		7	22	709	31	8	23	
DISTRICT 16		5	8	692	15	5	10	
DISTRICT 17		11	19	1218	35	12	23	
DISTRICT 18		12	7	652	19	12	7	
DISTRICT 19		20	32	1073	59	20	39	
DISTRICT 20		20	84	1199	108	20	89	
DISTRICT 21		19	18	1086	40	19	21	

OCEAN COUNTY
OFFICIAL BOARD OF CANVASSER REPORT
PRIMARY ELECTION 06/02/87

OFFICE	CANDIDATE	(R) VICARI	(D) PALKOSKI	NUMBER OF REGISTERED	NUMBER OF BALLOTS CAST	REP BALLOT CAST	DEM BALLOT CAST	
FREEHOLDER	DISTRICT 22	6	14	938	21	6	15	
	DISTRICT 23	59	67	740	132	63	69	
	DISTRICT 24	26	31	758	60	26	34	
	DISTRICT 25	31	31	1278	65	31	34	
	DISTRICT 26	35	15	589	54	37	17	
	DISTRICT 27	8	9	948	19	9	10	
	DISTRICT 28	64	93	868	195	66	99	
	DISTRICT 29	14	7	935	21	14	7	
	DISTRICT 30	39	69	820	119	41	78	
	DISTRICT 31	49	51	709	104	49	55	
	DISTRICT 32	9	27	611	37	9	28	
	DISTRICT 33	46	29	1194	76	47	29	
	DISTRICT 34	12	17	618	30	12	18	
	MILITARY	0	0	0	0	0	0	0
	CIVILIAN	26	14	0	46	27	19	0
	MUNICIPAL TOTALS	767	958	30263	1857	803	1054	0
	DOVER TOWNSHIP							
		DISTRICT 01	31	27	538	64	35	29
		DISTRICT 02	16	14	567	36	22	14
		DISTRICT 03	14	3	580	19	14	5
		DISTRICT 04	33	8	926	43	35	8
		DISTRICT 05	23	27	867	51	24	27
		DISTRICT 06	49	22	1033	74	52	22
		DISTRICT 07	23	28	737	56	28	28
		DISTRICT 08	39	33	1222	78	41	37
		DISTRICT 09	46	15	1011	64	48	16
		DISTRICT 10	8	8	477	19	9	10
		DISTRICT 11	12	21	698	35	12	23
		DISTRICT 12	40	24	1172	69	43	26
		DISTRICT 13	18	4	658	26	20	6
		DISTRICT 14	17	12	1096	32	20	12
		DISTRICT 15	61	49	785	117	64	53
		DISTRICT 16	14	13	702	29	15	14
		DISTRICT 17	7	13	708	22	7	15
DISTRICT 18		19	4	609	29	24	5	
DISTRICT 19		30	21	1108	53	31	22	
DISTRICT 20		43	29	1302	74	44	30	
DISTRICT 21		27	9	915	43	27	16	
DISTRICT 22		83	77	1051	175	87	88	
DISTRICT 23		18	12	1171	34	19	15	
DISTRICT 24		17	11	868	28	17	11	
DISTRICT 25		48	44	721	96	51	45	
DISTRICT 26		11	60	773	86	18	68	
DISTRICT 27		16	13	921	30	16	14	
DISTRICT 28		19	11	750	30	19	11	

OCEAN COUNTY
 OFFICIAL BOARD OF CANVASSER REPORT
 PRIMARY ELECTION 06/02/87

M. Dean Haines
 Office of the County Clerk

OFFICE	FREEHOLDER	NUMBER OF REGISTERED	NUMBER OF BALLOTS CAST	REP BALLOT CAST	DEM BALLOT CAST
CANDIDATE	(R) VICARI	(D) PALKOSKI			
DISTRICT 29	33	22	55	33	22
DISTRICT 30	13	31	48	16	32
DISTRICT 31	11	16	29	11	18
DISTRICT 32	32	13	52	37	15
DISTRICT 33	16	16	35	16	19
DISTRICT 34	33	20	649	36	20
DISTRICT 35	11	20	699	14	20
DISTRICT 36	21	19	854	23	23
DISTRICT 37	13	20	522	35	19
DISTRICT 38	11	16	654	34	16
DISTRICT 39	9	11	771	10	12
DISTRICT 40	32	17	602	32	18
DISTRICT 41	15	22	651	21	23
DISTRICT 42	12	13	684	15	13
MILITARY	2	0	0	2	0
CIVILIAN	26	29	0	61	32
MUNICIPAL TOTALS	1072	897	33649	1171	972
EAGLEWOOD TOWNSHIP					
DISTRICT 01	99	19	657	109	23
MILITARY	0	0	0	0	0
CIVILIAN	0	0	0	0	0
MUNICIPAL TOTALS	99	19	657	109	23
HARVEY CEDARS					
DISTRICT 01	40	7	344	43	7
MILITARY	0	0	0	0	0
CIVILIAN	0	0	0	2	0
MUNICIPAL TOTALS	40	7	344	45	7
ISLAND HEIGHTS BOROUGH					
DISTRICT 01	52	22	970	54	25
MILITARY	0	0	0	0	0
CIVILIAN	2	4	0	2	4
MUNICIPAL TOTALS	54	26	970	56	29
JACKSON TOWNSHIP					
DISTRICT 01	25	14	598	26	14
DISTRICT 02	23	22	1170	25	23
DISTRICT 03	29	0	834	31	11
DISTRICT 04	29	8	672	33	8
DISTRICT 05	12	13	932	12	15
DISTRICT 06	9	12	680	9	13
DISTRICT 07	11	14	793	11	17
DISTRICT 08	12	14	715	12	15
DISTRICT 09	15	18	1383	15	21
DISTRICT 10	18	5	611	18	6
DISTRICT 11	26	44	443	26	46
DISTRICT 12	12	5	586	12	5

OCEAN COUNTY
OFFICIAL BOARD OF CANVASSER REPORT
PRIMARY ELECTION 06/02/87

OFFICE	CANDIDATE	(R) VICARI	(D) PALKOSKI	NUMBER OF REGISTERED	NUMBER OF BALLOTS CAST	REP BALLOT CAST	DEM BALLOT CAST
FREEHOLDER	MUNICIPAL TOTALS	276	243	11394	567	295	272
	LACEY TOWNSHIP						
	DISTRICT 01	27	20	667	49	27	22
	DISTRICT 02	27	26	959	58	29	27
	DISTRICT 03	22	14	849	41	23	18
	DISTRICT 04	29	22	1036	57	30	27
	DISTRICT 05	29	27	1224	431	242	189
	DISTRICT 06	38	20	1010	61	41	20
	DISTRICT 07	26	12	648	42	30	12
	DISTRICT 08	20	21	884	45	22	23
DISTRICT 09	12	10	703	26	13	13	
DISTRICT 10	19	18	946	43	24	19	
DISTRICT 11	106	56	573	177	115	62	
DISTRICT 12	13	8	646	21	13	8	
MILITARY	0	0	0	0	0	0	
CIVILIAN	14	11	0	27	15	12	
MUNICIPAL TOTALS	382	265	10145	1076	624	452	
LAKEHURST BOROUGH							
DISTRICT 01	55	20	948	84	61	23	
MILITARY	0	0	0	0	0	0	
CIVILIAN	4	0	0	7	5	2	
MUNICIPAL TOTALS	59	20	948	91	66	25	
LAKELWOOD TOWNSHIP							
DISTRICT 01	4	13	561	20	4	16	
DISTRICT 02	7	13	475	24	9	15	
DISTRICT 03	134	75	835	223	144	79	
DISTRICT 04	8	43	625	67	13	54	
DISTRICT 05	20	17	682	39	19	20	
DISTRICT 06	23	18	952	49	26	23	
DISTRICT 07	5	16	946	22	5	17	
DISTRICT 08	15	20	443	39	18	21	
DISTRICT 09	17	9	616	30	18	12	
DISTRICT 10	11	4	471	19	15	4	
DISTRICT 11	7	7	597	19	10	9	
DISTRICT 12	32	48	912	92	34	58	
DISTRICT 13	4	14	890	20	4	16	
DISTRICT 14	18	23	401	52	24	28	
DISTRICT 15	23	25	939	49	24	25	
DISTRICT 16	24	12	1156	42	27	15	
DISTRICT 17	15	21	663	40	17	23	

OCEAN COUNTY
OFFICIAL BOARD OF CANVASSER REPORT
PRIMARY ELECTION 06/02/87

M. Dean Haines
Office of the County Clerk

OFFICE	CANDIDATE	(R) VICARI	(D) PALKOSKI	NUMBER OF REGISTERED	NUMBER OF BALLOTS CAST	REP BALLOT CAST	DEM BALLOT CAST
FREEHOLDER	DISTRICT 18	43	37	512	82	44	38
	DISTRICT 19	59	34	566	96	62	34
	DISTRICT 20	19	48	481	82	20	20
	DISTRICT 21	16	70	431	72	20	52
	DISTRICT 22	70	26	586	101	74	27
	DISTRICT 23	79	37	586	122	84	38
	DISTRICT 24	113	98	851	219	117	102
	DISTRICT 25	17	25	718	43	18	25
	DISTRICT 26	16	9	716	29	17	12
	DISTRICT 27	1	3	995	4	1	3
	MILITARY	0	0	0	0	0	0
	CIVILIAN	74	40	0	115	75	40
	MUNICIPAL TOTALS	912	754	18606	1811	985	826
	LAVALLETTÉ BOROUGH						
	DISTRICT 01	216	68	1840	409	331	78
	MILITARY	0	0	0	0	0	0
	CIVILIAN	9	3	1840	16	13	3
	MUNICIPAL TOTALS	225	71		425	344	81
	LITTLE EGG HARBOR TWSP.						
	DISTRICT 01	54	4	659	73	68	5
	DISTRICT 02	52	20	919	89	62	27
	DISTRICT 03	47	40	663	117	64	53
	DISTRICT 04	45	27	717	93	56	37
	DISTRICT 05	60	21	625	89	67	22
	DISTRICT 06	49	39	771	108	93	45
	DISTRICT 07	49	28	712	96	62	34
	MILITARY	0	0	0	0	0	0
CIVILIAN	8	5	0	13	8	5	
MUNICIPAL TOTALS	364	184	5066	678	450	228	
LONG BEACH TOWNSHIP							
DISTRICT 01	78	11	886	96	85	11	
DISTRICT 02	83	13	1087	105	90	15	
DISTRICT 03	41	9	578	53	44	9	
MILITARY	2	0	0	2	2	2	
CIVILIAN	1	2	0	3	1	1	
MUNICIPAL TOTALS	205	35	2551	259	222	37	
MANCHESTER TOWNSHIP							
DISTRICT 01	33	9	730	43	34	9	
DISTRICT 02	26	10	946	43	29	14	
DISTRICT 03	31	13	856	51	38	13	
DISTRICT 04	71	30	584	104	73	31	
DISTRICT 05	86	16	452	104	88	16	
DISTRICT 06	123	34	619	163	125	38	
DISTRICT 07	49	7	410	57	50	7	
DISTRICT 08	52	17	490	72	55	17	

OCEAN COUNTY
OFFICIAL BOARD OF CANVASSER REPORT
PRIMARY ELECTION 06/02/87

OFFICE	CANDIDATE	(R)	(D)	NUMBER OF REGISTERED	NUMBER OF BALLOTS CAST	REP BALLOT CAST	DEM BALLOT CAST
		VICARI	PALKOSKI				
	DISTRICT 09	125	28	682	161	132	29
	DISTRICT 10	73	17	447	91	73	18
	DISTRICT 11	94	21	696	119	96	23
	DISTRICT 12	120	23	647	150	125	25
	DISTRICT 13	117	27	869	154	125	29
	DISTRICT 14	142	36	1065	184	146	38
	DISTRICT 15	60	9	872	69	60	9
	DISTRICT 16	130	37	1243	164	126	38
	DISTRICT 17	102	32	722	142	107	35
	DISTRICT 18	106	21	690	134	113	21
	DISTRICT 19	90	21	994	112	90	22
	DISTRICT 20	124	54	1433	184	128	56
	DISTRICT 21	166	88	1283	262	170	92
	DISTRICT 22	136	26	716	167	140	27
	DISTRICT 23	114	39	737	161	118	43
	DISTRICT 24	29	10	1128	43	32	11
	DISTRICT 25	105	33	717	146	112	34
	DISTRICT 26	112	43	772	159	116	43
	DISTRICT 27	46	18	794	68	49	19
	MILITARY	0	0	0	0	0	0
	CIVILIAN	60	22	0	84	61	23
	MUNICIPAL TOTALS	2522	741	21594	3391	2611	780
	MANTOLOKING BOROUGH						
	DISTRICT 01	77	2	351	94	92	2
	MILITARY	0	0	0	0	0	0
	CIVILIAN	3	0	0	3	3	0
	MUNICIPAL TOTALS	80	2	351	97	95	2
	OCEAN TOWNSHIP						
	DISTRICT 01	83	17	868	103	86	17
	DISTRICT 02	66	17	773	98	81	17
	DISTRICT 03	40	25	791	72	41	31
	MILITARY	0	0	0	0	0	0
	CIVILIAN	3	3	0	6	3	3
	MUNICIPAL TOTALS	192	62	2432	279	211	68
	OCEAN GATE BOROUGH						
	DISTRICT 01	147	18	848	190	170	20
	MILITARY	0	0	0	0	0	0
	CIVILIAN	1	0	0	1	1	0
	MUNICIPAL TOTALS	148	18	848	191	171	20
	PINE BEACH BOROUGH						
	DISTRICT 01	155	69	1190	261	178	83
	MILITARY	0	0	0	0	0	0
	CIVILIAN	0	0	0	0	0	0
	MUNICIPAL TOTALS	155	69	1190	261	178	83
	PLUMSTED TOWNSHIP						
	DISTRICT 01	43	17	1123	67	46	21

OCEAN COUNTY
OFFICIAL BOARD OF CANVASSER REPORT
PRIMARY ELECTION 06/02/87

OFFICE	FREEHOLDER	(R) VICARI	(D) PALKOSKI	NUMBER OF REGISTERED	NUMBER OF BALLOTS CAST	REP BALLOT CAST	DEM BALLOT CAST
CANDIDATE							
DISTRICT 02		25	7	575	34	27	7
MILITARY		0	0	0	0		
CIVILIAN		2	1	0	3	2	1
MUNICIPAL TOTALS		70	25	1698	104	75	29
POINT PLEASANT BOROUGH							
DISTRICT 01		5	11	572	16	5	11
DISTRICT 02		17	8	723	26	18	8
DISTRICT 03		16	11	621	30	18	12
DISTRICT 04		20	15	478	37	22	15
DISTRICT 05		26	13	689	45	29	16
DISTRICT 06		16	1	416	22	19	3
DISTRICT 07		16	13	552	30	17	13
DISTRICT 08		24	10	869	34	24	10
DISTRICT 09		34	11	573	45	34	11
DISTRICT 10		18	20	666	39	18	21
DISTRICT 11		23	17	668	42	23	19
DISTRICT 12		25	17	735	52	33	19
DISTRICT 13		10	12	406	23	11	12
DISTRICT 14		7	7	411	17	8	9
DISTRICT 15		22	11	616	33	22	11
MILITARY		1	0	0	1	1	
CIVILIAN		10	5	0	16	11	5
MUNICIPAL TOTALS		290	182	8995	508	313	195
POINT PLEASANT BEACH BORO							
DISTRICT 01		18	9	397	29	20	9
DISTRICT 02		18	7	545	34	25	9
DISTRICT 03		41	13	1004	462	395	67
DISTRICT 04		47	20	941	70	50	20
MILITARY		0	0	0	0		
CIVILIAN		4	3	0	7	4	3
MUNICIPAL TOTALS		128	52	2887	602	494	108
SEASIDE HEIGHTS BOROUGH							
DISTRICT 01		136	17	975	188	167	21
MILITARY		0	0	0	0		
CIVILIAN		3	1	0	4	3	1
MUNICIPAL TOTALS		139	18	975	192	170	22
SEASIDE PARK BOROUGH							
DISTRICT 01		60	10	625	378	288	90
DISTRICT 02		84	23	950	120	96	24
MILITARY		0	0	0	0		
CIVILIAN		8	1	0	11	10	1
MUNICIPAL TOTALS		152	34	1575	509	394	115
SHIP BOTTOM BOROUGH							
DISTRICT 01		120	22	946	170	144	26
MILITARY		0	0	0	0		

OCEAN COUNTY
OFFICIAL BOARD OF CANVASSER REPORT
PRIMARY ELECTION 06/02/87

OFFICE	CANDIDATE	(R) VICARI	(D) PALKOSKI	NUMBER OF REGISTERED	NUMBER OF BALLOTS CAST	REP BALLOT CAST	DEM BALLOT CAST
	CIVILIAN	4	0	0	5	4	1
MUNICIPAL TOTALS		124	22	946	175	148	27
SOUTH TOMS RIVER BOROUGH							
	DISTRICT 01	10	11	401	32	10	22
	DISTRICT 02	17	32	798	52	17	35
	DISTRICT 03	14	14	485	33	15	18
	MILITARY	0	0	0	0	0	0
	CIVILIAN	3	2	0	7	3	4
MUNICIPAL TOTALS		44	59	1664	124	45	79
STAFFORD TOWNSHIP							
	DISTRICT 01	34	16	820	51	35	16
	DISTRICT 02	22	10	770	35	23	12
	DISTRICT 03	31	20	1151	53	31	22
	DISTRICT 04	36	29	931	72	38	34
	DISTRICT 05	67	33	783	104	68	36
	DISTRICT 06	36	22	1096	62	38	24
	DISTRICT 07	20	3	676	25	21	4
	MILITARY	0	0	0	0	0	0
	CIVILIAN	8	6	0	15	8	7
MUNICIPAL TOTALS		254	139	6227	417	262	155
SURF CITY BOROUGH							
	DISTRICT 01	128	12	974	157	144	13
	MILITARY	0	0	0	0	0	0
	CIVILIAN	3	0	0	4	4	0
MUNICIPAL TOTALS		131	12	974	161	148	13
TUCKERTON BOROUGH							
	DISTRICT 01	79	25	918	112	86	26
	DISTRICT 02	40	7	486	56	48	8
	MILITARY	0	0	0	0	0	0
	CIVILIAN	1	2	0	3	1	2
MUNICIPAL TOTALS		120	34	1404	171	135	36
TOTAL COUNTY VOTE		11294	6021	201673	20647	13456	7191
TOTAL COUNTY VOTE INCLUDES MILITARY AND CIVILIAN ABSENTEE BALLOTS		0	0	0	0	0	0
TOTAL CIVILIAN ABSENTEE		380	192	0	643	428	215
TOTAL MILITARY ABSENTEE		5	0	0	5	5	0